

SATA

SATAjet® 1000 - the versatile spray gun series

Multi talented!

**SATAjet 1000:
Allround paint spray guns
for craft and industry**

- High speed application
- Fine atomisation
- Optimum finish results in all fields of application
- Robust and low maintenance need
- Suitable for waterborne paints and corrosion resistant
- Easy clean surface
- Compact and lightweight
- VOC-compliant
- Maximised material savings due to innovative SATA nozzle system

**"THE NEW
GENERATION"**



CE

SATA



SATAjet® 1000™ B –
the gravity flow cup spray gun
for paint and other wet applications

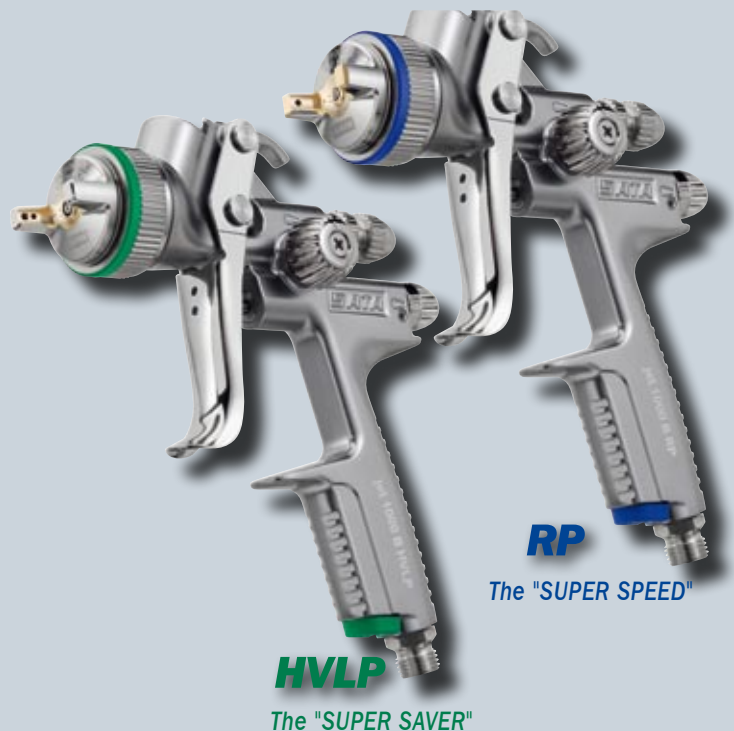
Special features:

- Stainless steel paint nozzle with thread packing for easy cleaning of the paint channel



QCC™ cup connection –
quick cup change and easy
cleaning

- The sieve integrated in the cup saves time-consuming pre-filtering
- Air consumption at 2 bars:
 HVLP version: approx. 350 NI/min.
 RP version: approx. 275 NI/min.



- Weight 431 g (without cup)
- Available nozzle sizes:
 HVLP: 1.4/1.7/1.9/2.1
 RP: 0.8/1.0/1.3/1.6/1.8/2.0/2.5/3.0/4.0/5.0

The ideal solution
for craft and industry

As an example, the SATAjet 1000 can be used for a multitude of applications including:

- Painters
- Carpenters, upholstery manufacturers
- Trade show construction, shopfitting, interior fitting
- Metal working industry
- Ceramic coatings (K version)
- Application of separating agents

Due to the wide range of nozzle sizes available, various materials, such as low-viscosity stains, clear coats, texture finishes and glazes, as well as spray-on glues and other thixotropic products, can be perfectly applied.

To choose the correct nozzle size, please check our recommendations at www.sata.com or follow the technical data sheet of the paint manufacturer.

Perfect user comfort with the universal SATA paint spray guns



SATAjet® 1000™ K – the small, light-weight and fast pressure fed spray gun

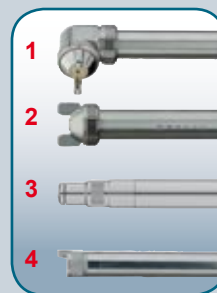
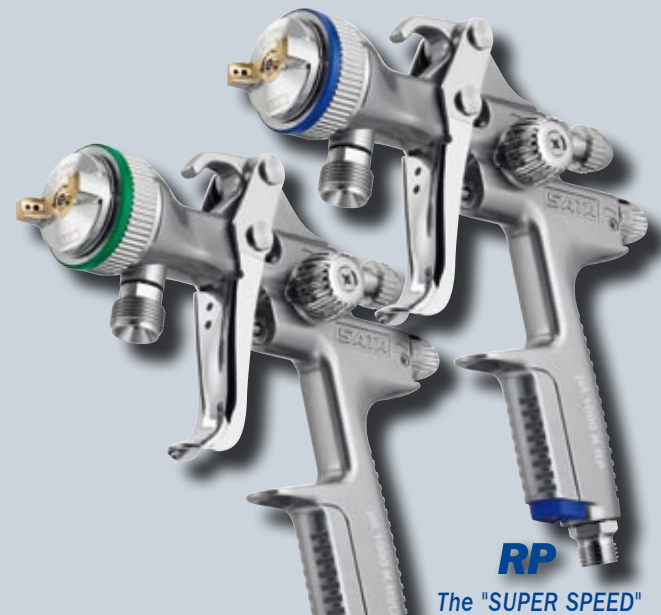
Special features:

- The lightweight among the pressure fed spray guns
- In combination with paint pressure tanks or material feeder pumps, they are a powerful application tool
- The material supply can be connected via material tube, Teflon ball valve or material quick coupling
- Air consumption at 2.5 bars:
HVL P: approx. 530 NI/min
RP: approx. 410 NI/min
- Weight 454 g
- Available nozzle sizes: HVL P: 0.8/1.0/1.2/1.6/2.0
RP: 0.8/1.1/1.3/1.5/1.7/2.0/2.5/3.0
Specific nozzles for special coatings available

Extensions (for gravity cup and pressure fed spray guns):

For special applications, such as internal coating of tubes or radiator painting, various extensions ranging from 20 to 300 cm (8 to 120 inches) are available:

- 1 with 90° angular head
- 2 with standard nozzle for regular spray pattern
- 3 with plate-shaped internal mixing nozzle for 360° radial spraying
- 4 with 30° diagonal radiator spray nozzle



HVL P
The "SUPER SAVER"

RP
The "SUPER SPEED"

SATAjet® 1000™ paint spray guns – for multipurpose paint jobs

For the application of a wide array of different materials, it is indispensable to have a flexible, quickly ready for use and easy to clean paint spray gun. The SATAjet 1000 spray gun perfectly complies with all these requirements.

It is not only easy to use, but the universally adjustable spray pattern can be perfectly adapted to any object. The very fine atomisation in combination with a high work speed and the wide spray pattern wet the surface quickly. Special air passages on the air cap horns prevent

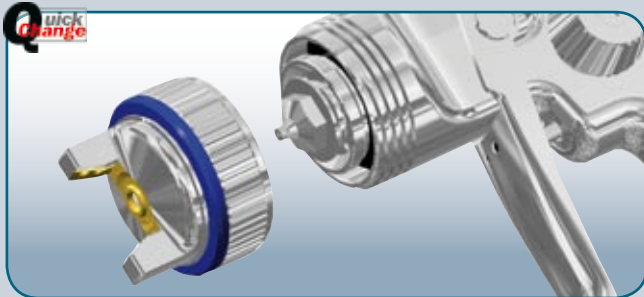
material accumulations caused by overspray. The wide and smooth material passages improve the material flow to allow the application of high viscosity materials – this facilitates cleaning and provides for perfect paint jobs.



SATAjet® 1000™ H – the suction cup version

Special features:

- Available with 1 l aluminium suction cup
- Easy material refill due to quick release coupling on the cup
- Air consumption at 2.5 bars approx. 275 NI/min.
- Weight 454 g without cup
- Available nozzle sizes:
RP: 1.6/1.8/2.0



SATA® QC™ Quick Change™ – quick air cap exchange with only one and a half turns with all SATAjet 1000 spray gun types

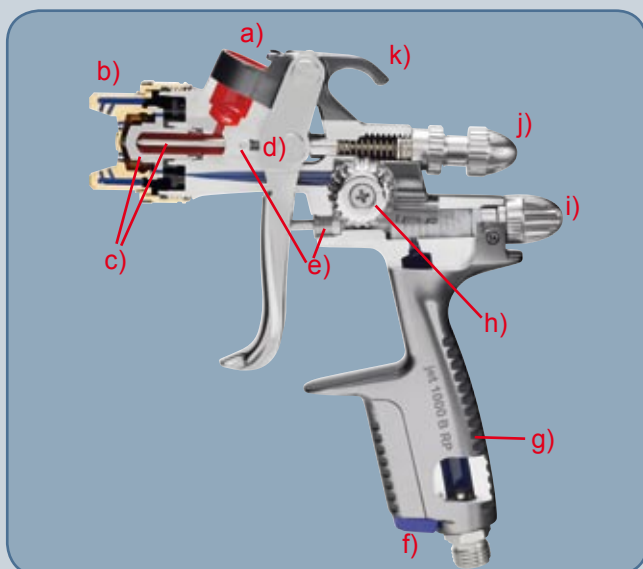
RP The "SUPER SPEED"



Main features of the SATAjet® 1000™ spray gun

- Suitable for the application of both waterborne and solvent-borne materials
- Easy to clean and corrosion-resistant surface
- Comfortable, ergonomically balanced handling of the control elements, such as material flow control, the thumb adjustable round/flat spray control and integrated air micrometer
- Individual marking of the spray gun with coloured CCS clips
- The QC Quick Change Thread allows an easy and quick air cap exchange with just one and a half turns
- Green or blue coloured identification rings on air cap ring to denote HVLP and RP technology
- Robust, long-lasting and easy to clean

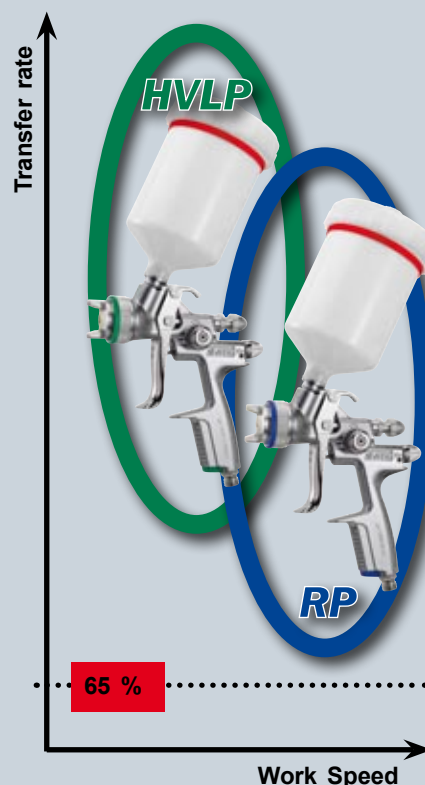
Quality right from the start



Feature Benefits

Cutaway picture of a SATAjet 1000 B RP:

- a) QCC™ QCC cup connection with sieve holder in cup or gun for rapid cup replacement - eases cleaning
- b) Nickel-plated brass air cap incorporating a coloured identification ring and QC™ Quick Change air cap thread for a quick change with one and a half turn only
- c) Material nozzle and paint needle made of stainless steel
- d) Trigger with paint needle cover
- e) Self-adjusting air piston and paint needle sealings
- f) CCS™ clip for individual gun identification
- g) Ergonomically balanced spray gun body with easy to clean and corrosion-resistant surface
- h) Round/flat spray control – easy adjustment with the thumb
- i) Air micrometer to adjust atomisation air
- j) Material flow control with counter nut
- k) Gun suspension hook



SATA - Precision and Experience

A professional tool needs to meet the high expectations of quality, long lifetime and sturdiness. SATA has been guaranteeing the high quality of its products for many years. Every SATA paint spray gun is "Made in Germany" and manually tested by skilled personnel before shipment.

With SATAjet 1000 spray guns, both craft and industry benefit from a large product programme with an extensive and practice-oriented range of accessories for optimum painting results.

HVLP and RP: two ways, one aim

Based on spray techniques, object and material, each painter can either opt for the "Super Saver" SATAjet 1000 HVLP or the "Super Speed" SATAjet 1000 RP. Both technologies (HVLP low pressure and the optimised RP high pressure) by far exceed transfer efficiency rates of 65%.

SATAjet 1000: The paint spray gun for craft and industry.

Original SATA accessories and spare parts



QCC quick change gravity flow cup
PVC (0.6 l) or aluminium (1.0 l) for SATA paint spray guns. Only the original is equipped with the red ring.



High quality air hose
Silicone-free, anti-static, 9 mm, cpl. with nipple and quick coupling, 10 m long.



SATA® BVD™ pressurised cup conversion kit
For SATAjet 1000 B RP with 0.7 l pressurised cup for the application of highly viscous materials.



SATA® adam™
Retrofit micrometer with digital pressure display for the exact adjustment of the atomisation pressure.



Air micrometer with gauge
To adjust the spray pressure at the air inlet of the paint spray gun.



SATA Cleaning Kit
Content: 1 standard cleaning brush, 1 double-sided fine brush, 12 nozzle cleaning needles made of special steel.

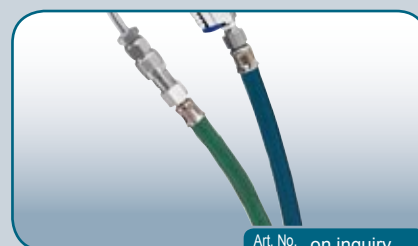


To complement the SATA pressure fed spray guns, various material supply systems are available:

- SATA® vario top spray™ double diaphragm pumps in several versions
- Paint pressure tanks in different sizes ranging from 2 to 48 litres capacity. Versions and article numbers upon request, or at www.sata.com, respectively.



Material quick coupling
For quick disconnection of the pressure fed spray gun without pressure relief.



Hoses/Hose Pairs
Available in different lengths for various fields of application.



SATA® air star F™
Respirator half mask with double-filter system A2:P3 R D which protects from dust, dirt and organic solvent vapours.



SATA® vision™ 2000
Air fed full face respirator independent from ambient air, complete with activated charcoal filter belt unit.



SATA GmbH & Co. KG
Domertalstr. 20 • 70806 Kornwestheim • Germany
Tel. +49 7154 811-200 • Fax +49 7154 811-194
www.sata.com • E-mail: export@sata.com

Your SATA dealer: